

**ASSISTIVE SOFTWARE USE GUIDE:
Dragon Naturally Speaking**



Overview

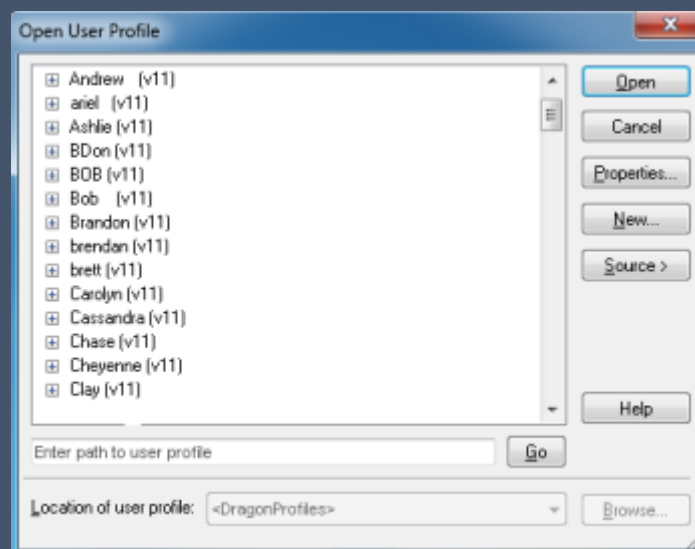
Dragon NaturallySpeaking is a voice input support program that can be used in combination with programs such as MS

Word or e-mail to aid any person who finds it difficult to type or physically access the computer. Using his or her voice,

The user can start programs, open menus, click buttons, dictate text into documents, and write and send e-mails

To Use

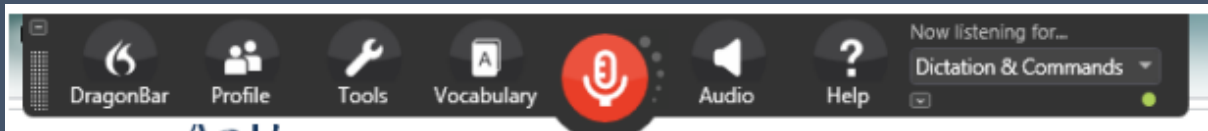
1. Before you use Dragon, you will need to plug in your microphone / headset
2. To open Dragon, click on the Dragon NaturallySpeaking 13 shortcut on the Desktop or in the Start Menu.
3. The Open User Profile dialog box will appear. Select your name from the list and click Open. If you are a new user, click new to begin the new user wizard and Dragon will take you through the process of creating a new user profile.



4. Dragon will open the following toolbar on your desktop. The microphone is off (red).



5. When you place your cursor over the toolbar, it will expand, providing options for Dragon Bar, Profile, Tools, Vocabulary, Audio, Help, and a scroll bar for what dragon listens for.



Turn the microphone on by clicking the Microphone icon or pressing NumKey+. When Dragon is ready to begin listening, the microphone will turn green and the feedback box will read, "Normal Mode: You can dictate and use voice commands."